

## ARTICLE

<http://dx.doi.org/10.4314/mcd.v14i1.3>

# Bark harvesting: a potential threat for the Grandidier's baobab *Adansonia grandidieri* in western Madagascar

Daudet Andriafidison<sup>I</sup>, Cynthia Onjanantenaina Raveloson<sup>II</sup>, Willy Sylvio Mananjara<sup>I</sup>, Julie Hanta Razafimanahaka<sup>I</sup>

Correspondence:

Daudet Andriafidison  
Madagasikara Voakajy, Lot II F 14 P Bis A Andraisoron, BP 5181,  
Antananarivo 101, Madagascar  
Email: andriafidison@voakajy.mg

## ABSTRACT

The Grandidier's baobab conveys the image of Madagascar worldwide. Locally, these trees have multiple uses with all parts of the plant being exploited by the population. We investigated the patterns of bark harvesting on the Grandidier's baobab in three districts in the Menabe Region: Mahabo, Manja and Morondava. Following 103 transects of 1 km each, we found that 54.0% of the baobab trees had been subject to bark extraction. The mean total area exploited per tree was  $3,1 \pm 0.2\text{m}^2$ . Between April 2013 and January 2014, we also monitored four markets that regularly sell baobab products: Bemanonga, Mahabo, Morondava and Analaiva. Bemanonga revealed to be the largest market for the baobab bark with 21,594 straps and 34,517m of ropes recorded during the observation period. We estimate that some 9800 Grandidier's baobab trees have been affected by debarking to supply the demands recorded over the ten months monitoring period. If this demand remains constant, all baobab trees in Menabe would be debarked within the next 39 years. Since most baobab trees have been located in hard-to-reach areas and in protected areas, bark extraction may intensify in accessible sites and populations without protected status may disappear locally. This would result in local extinction of the species within a short period. To ensure sustainable management of the Grandidier's baobab, we recommend enriching the population by planting young baobabs, regulating access to the resources through local management structures and promoting alternatives to baobab ropes.

## RÉSUMÉ

Le baobab de Grandidier est une espèce emblématique de Madagascar. Il évoque la Grande Île dans le monde entier. Dans sa zone d'occurrence, c'est une espèce à usage multiple pour les riverains qui utilisent toutes les parties de ce baobab. La présente étude porte sur l'exploitation de l'écorce du baobab de Grandidier dans la région Menabe, plus particulièrement dans les districts de Mahabo, Manja et de Morondava. Pour estimer l'étendue de l'exploitation des écorces sur les pieds de baobabs, des observations

ont été réalisées sur 103 transects de 1 km de long entre avril 2013 et janvier 2014. Pour évaluer l'importance des écorces de baobab pour les riverains, des observations ont été conduites au niveau de quatre marchés de la région dans les villes de Bemanonga, Mahabo, Morondava et Analaiva au cours de la même période. Au total, 21 594 lanières d'écorce et 34 517 m de corde de baobab ont été recensés dans les quatre marchés. La plus importante quantité d'écorce de baobabs commercialisée a été enregistrée à Bemanonga. À partir des données récoltées, il est estimé que près de 9800 pieds de baobabs à écorcer sont nécessaires pour couvrir les besoins des riverains pendant la seule période d'études de 10 mois. Si la demande devait se maintenir à ce niveau, tous les pieds de baobab de la région Menabe, dont la population avait été estimée à environ un million d'individus, seraient écorcés au cours des 39 prochaines années. Comme la plupart des pieds de baobab ont été localisés dans des zones difficiles d'accès et dans les aires protégées, l'extraction des écorces pourrait s'intensifier dans les sites accessibles et les populations qui ne bénéficient d'aucun statut de protection pourraient disparaître localement. Pour assurer la gestion durable du baobab de Grandidier, il est ainsi recommandé de renforcer la population existante par la plantation de jeunes plants, la régulation de l'accès aux ressources par des structures locales de gestion et la promotion d'alternatives aux cordes réalisées avec les écorces de baobab.

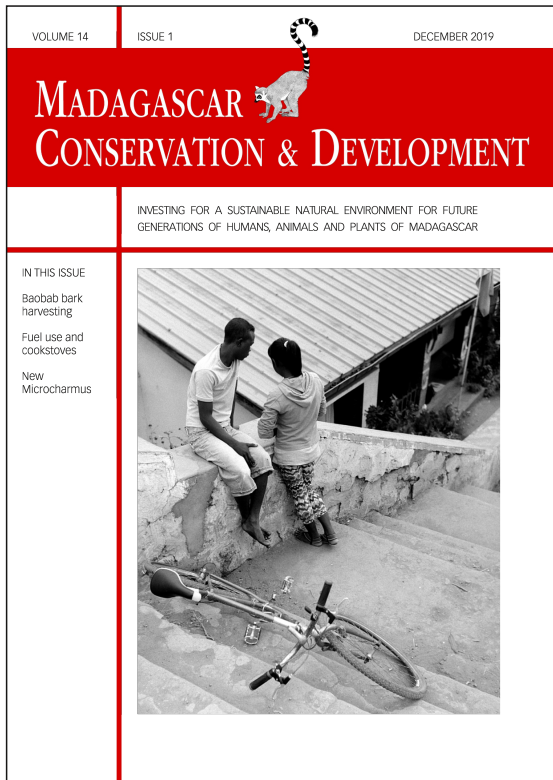
## INTRODUCTION

Madagascar has a unique biodiversity that places the country among the world's conservation priorities (Myers et al. 2000, Brooks et al. 2002). Considering the vascular plants only, 11,220 species were recorded in Madagascar, of which 82% are endemic (Callmander et al. 2011). The eastern Malagasy rainforest is among the centres of species richness with more than 3000 species per 10,000 km<sup>2</sup> (Mutke et al. 2011). The western tropical dry forest has a lower species richness but is famous for the iconic baobabs, which have important functions for people and the ecosystem

<sup>I</sup> Madagasikara Voakajy, Lot II F 14 P Bis A Andraisoron, BP 5181, Antananarivo, Madagascar

<sup>II</sup> Direction Régionale de l'Environnement, de l'Écologie et des Forêts Menabe, Morondava, Madagascar

Citation Andriafidison, A., Raveloson, C. O., Mananjara, W. S., Razafimanahaka, J. H. 2019. Bark harvesting: a threat for the Grandidier's baobab *Adansonia grandidieri* in western Madagascar. Madagascar Conservation & Development 14, 1: 6–11. <http://dx.doi.org/10.4314/mcd.v14i1.3>



Madagascar Conservation & Development is the journal of Indian Ocean e-Ink. It is produced under the responsibility of this institution. The views expressed in contributions to MCD are solely those of the authors and not those of the journal editors or the publisher.

All the Issues and articles are freely available at <http://www.journalmcd.com>



Contact Journal MCD  
[info@journalmcd.net](mailto:info@journalmcd.net) for general inquiries regarding MCD  
[funding@journalmcd.net](mailto:funding@journalmcd.net) to support the journal

Madagascar Conservation & Development  
 Institute and Museum of Anthropology  
 University of Zurich  
 Winterthurerstrasse 190  
 CH-8057 Zurich  
 Switzerland

io@i

Indian Ocean e-Ink  
 Promoting African Publishing and Education  
[www.ioeink.com](http://www.ioeink.com)

 MISSOURI BOTANICAL GARDEN

Missouri Botanical Garden (MBG)  
 Madagascar Research and Conservation Program  
 BP 3391  
 Antananarivo, 101, Madagascar

and are facing multiple threats (Miles et al. 2006, Graf et al. 2009, Ehrensperger et al., 2013, Grinand et al. 2013, Zinner et al. 2013).

Eight species of baobabs are known worldwide, six of which are endemic to western Madagascar (Cron et al. 2016, Karimi et al. 2019). According to Cuni Sanchez (2010), the baobab tree has a multitude of use in Africa and Australia. Besides utilizing the fruit, bark and leaves, the size and shape of the tree lends itself to spaces for water storage, prisons, toilets, burial grounds, sleeping places, shelters, ritual sites and venues for prayers (Mukamuri and Kozanayi 1999, Wickens and Lowe 2008). Malagasy baobabs have multiple functions and uses. The Grandidier's baobab *Adansonia grandidieri* stands out because of its iconic image representing Madagascar on most documentaries and advertisements. The Allée des Baobabs in Morondava attracts many tourists and is a major source of income for the Region (Scales 2014).

Non-timber forest products (NTFPs) are important resources for people in western Madagascar. Bushmeat, medicinal plants, materials for construction, weaving and other handicrafts are collected from the wild (Garcia and Goodman 2003, Norscia and Borgognini-Tarli 2006, Randrianandrianina et al. 2010, Scales 2012). These resources are collected for household consumption, but also sold on markets as a source of income. NTFPs often provide economic buffers to the Malagasy rural populations when crops fail and can help provide additional seasonal income when the benefits of other economic activities are reduced (Neudert et al. 2017).

NTFPs significantly contribute to livelihood security in the Menabe Region and have traditionally been used by rural communities for subsistence and trade (Ramohavelo and Sorg 2008). Tubers from *Dioscorea maciba* and *Tacca pinnatifida*, *Tenrec ecaudatus* bushmeat (a mammal species), and honey are important NTFPs for local livelihoods (Ramohavelo and Sorg 2008). Grandidier's baobab *Adansonia grandidieri* trees also provide locally important NTFP products, mainly for consumption (fruits, seeds, leaves and bark as infusion) and construction (Baum 1996, Marie et al. 2009). The Grandidier's baobab is listed as Endangered on the IUCN Red List of Threatened Species; the major threat is poor regeneration (IUCN 2016). This species is the most heavily exploited of Madagascar's baobabs (Perrier de la Bâthie 1924, Bond 2002, Rakotondrazanany 2016, pers. comm.). The fruits and seeds are collected for food and extraction of cooking oil, the bark is used to make ropes, and the spongy wood is dried and sold for thatch. However, the greatest threat to Grandidier's baobab comes from the conversion of its habitat into agricultural land. Mature trees are left standing, presumably because of their cultural importance and the value of the fruit, bark and wood. The impacts of local exploitation of NTFPs from this species remains poorly understood, limiting our ability to define appropriate conservation measures, especially in areas of conservation importance from where sustainable extraction is permitted.

In this article, we focus on the activity of bark collection from the Grandidier's baobab. We aim to understand the importance of this activity to rural communities in the Menabe Region and the potential impacts of bark harvesting on the species population. This information helps designing targeted conservation strategies for the Grandidier's baobab.

## METHODS

**STUDY AREA.** This study was carried out in the Menabe Region, in the western region of Madagascar, an area identified

as priority for conservation (Kremen et al. 2008, Wilmé et al. 2012). We focused on five communes in the three districts, where the Grandidier's baobab is frequently observed in the wild and derivatives found for sale at local markets (Figure 1).

**BAOBAB SURVEYS.** We used T-square sampling to estimate baobab density within seven different areas (Ankoba, Ampataka, Bepeha, Andoviana, Benato, Tanambao Sara and Bekonazy) between August 2009 and November 2011 (Krebs 1999, Greenwood and Robinson 2006). Following a random 1 km transect, the survey team stopped every 100 m—this is the observation point O, measured the distance  $x_i$  from the observation point to the nearest Grandidier's baobab (B1) and the distance  $y_i$  from B1 to its nearest neighbour with the condition that the angle OB1B2 is more than 90°. Baobab density was calculated using the formula:

$$D = \frac{n^2}{2.828 \sum x_i \sum y_i}$$

where D is the density and n is the total number of random points (Krebs 1999).

For each baobab tree, we estimated the trunk height, measured the circumference at breast height and if there are signs of bark removal, measured the area removed. Trunk height was measured based on the trigonometric method by West (2009), in which a team member held a horizontal T-shaped stick of 1 m at eye-level. The observer walked back until they can observe the base of the tree and the tip of the trunk. The distance between the observer and the base of the trunk, which is equivalent to the height of the tree, was then measured. Circumference at breast height (1,30 m) was measured with a tape measure. Considering that baobab barks are put in a rectangular shape after harvesting, we used the trunk height (h) and circumference (c) to calculate the surface of bark available (s) ( $s = h * c$ ). Similarly, if the barks have been removed from the tree, we measured the height (h1) and width (w) of the area without bark to calculate the surface of bark removed ( $s1 = h1 * w$ ). The proportion of surface exploited is the ratio between the total surface removed and the total surface available ( $p = s1 / s$ ). During the surveys, we collected information on baobab harvesting methods from our guides and the use of bark.

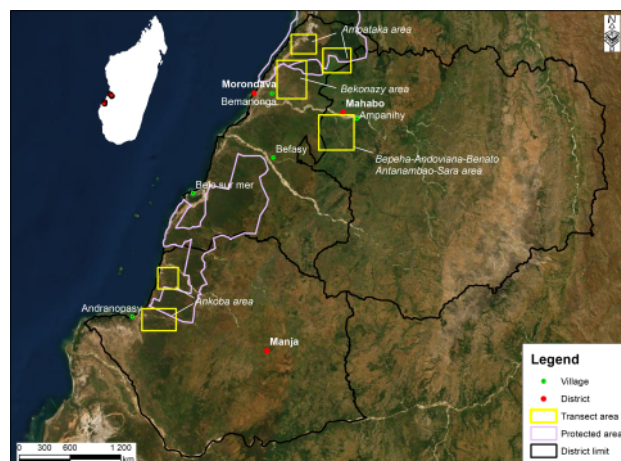


Figure 1. Study area.

**MARKET MONITORING.** Between April 2013 and January 2014, we employed four local observers to record baobab products available for sale at four markets: Morondava, Mahabo, Bemanonga, Analaiva (Figure 1). This method allowed us to estimate the supply of various baobab products (fruits, straps, ropes, barks, bark parts or pieces for infusion and powder), prices, provenance and quantity. The observers recorded data weekly with a logbook to ensure data are recorded in a similar way. We used Kruskal-Wallis test to compare monitoring efforts between markets and the frequency of observation of the different products.

For the barks and derived products, observers recorded the number of straps (strips of baobab bark) observed per vendor and estimated the length of the ropes made from baobab bark. They also recorded the price per strap and per meter of rope. Strap dimensions varied between 25–30 cm in width and 2–2.5 m in length. In the analysis, we assumed that all straps were 25 cm wide and 2 m long, and that the same dimensions of baobab bark are extracted. Open discussions with rope makers revealed that 1 m of rope can be produced with one strap. Using these data, we calculated the total surface of baobab barks needed to produce the products available on the market (surface = width \* length). Using the unit cost of each product, we calculated the price of baobab bark per square meter.

## RESULTS

### PATTERNS OF BARK HARVESTING.

We recorded a total of 1247 *Adansonia grandidieri* trees, of which 54.0% have been subject to bark extraction. Baobab density varied between our study sites and was highest in Analaiva and Andranopasy and lowest in Ampanihy and Bemanonga. In contrast, levels of bark extraction were highest in Bemanonga and Befasy and were lowest in Andranopasy and Ampanihy (Table 1). Large trees with a total bark surface of  $14.8 \pm 0.3 \text{ m}^2$  were preferred for bark extraction (Mann-Whitney,  $U = 141\,981$ ,  $Z = -2.981$ ,  $p = 0.0003$ ). Smaller trees with a total bark surface below  $13.2 \pm 0.4 \text{ m}^2$  were left intact. In general, only parts of the barks are removed, with an average height of 0.7 m and 0.9 m width on each tree. This was described as the traditional way to harvest the barks by the local guides. We also observed 41 baobab trees that had been deliberately felled for bark extraction, of which 16 were in Andranopasy, 14 in Ampanihy, 7 in Analaiva and 4 in Befasy. This practise was described as unusual and due to the increasing demands for baobab ropes. In 2010, we also found eight baobabs that were felled naturally by cyclones in Befasy. Barks of fallen and cut trees were extracted from the entire trunk.

### PATTERNS OF BAOBAB BARK TRADE.

We made 1240 observations of baobab products from the four local markets. Although monitoring effort varied between sites ( $n = 103, 71, 70$  and  $52$  days, respectively:  $6.7 \pm 0.7$  days per month), up to 80% of baobab products were observed in Bemanonga despite this site only accounting for 35% of our monitoring effort. Observations of baobab products in the other three markets never represented

more than 8% of the records from Analaiva, Mahabo and Morondava.

Three baobab species were reported in the markets: *Adansonia grandidieri* (91%), *A. za* (9%) and *A. rubrostipa* (only one record). Baobab products found in the markets included ropes made of fibres (36.0%), fruits (31.5%), thin straps made from fibres and used as twine (21.5%), bark pieces for infusion (4.6%), fungi collected from dead trees (5.1%), thick straps used for roofing and walls (1.0%), and seeds as well as leaves (0.1% each).

Observation of *Adansonia grandidieri* straps and ropes was significantly more frequent in Bemanonga with  $58.6 \pm 8.0$  records per month compared to  $2.1 \pm 0.4$  records for the other markets (Kruskal Wallis test:  $H_3 = 25.271$ ,  $p < 0.001$ ). In total, 21,594 straps and 34 517 m of rope were recorded from Bemanonga compared to less than 1500 straps and 1500 m of ropes in Analaiva, Mahabo and Morondava (Table 2). Only straps were available in Morondava, where it is more expensive compared to the other markets (Table 2). This is probably because 45.6 % of the straps in this market are from Andranopasy (Table 3), a commune 126 km away from Morondava. In Mahabo, ropes were twice as expensive as the straps (Table 2), although individual bark workers reported that a strap (generally of 0.25 cm wide and 2 m long) can make 1m of rope.

Straps are sold at  $\$US0.10 \pm 0.002$  per unit while ropes are sold at  $\$US0.17 \pm 0.003$  per meter. All straps sold in Mahabo market were from Ampanihy, a commune within the district and only 5.5% of the ropes are from outside the district (Table 3). Analaiva is the only market where ropes are cheaper than the straps (Table 2). This suggests that the demand for ropes in this market is low. Ropes not sold locally are sold in Bemanonga (Table 3) where the price is higher. Straps and ropes from Befasy and Belo-sur-Mer are also found in Bemanonga market (Table 3).

### BARK TRADE AND HARVESTING.

We estimated the number of baobab trees partially debarked between April 2013 and January 2014 to make the total quantity of ropes recorded (34,517m) to vary between 5230 and 5991. Estimations of strap and exploited bark surface area per one meter of rope are based on: (i) A typical strap being approximately 25 cm wide and 2 m long ( $0.5 \text{ m}^2$ ); (ii) the mean surface exploited per baobab tree being  $3.1 \pm 0.2 \text{ m}^2$ .

According to our calculations, 62.3% of the trees could be from Bemanonga, 26.4% from Analaiva, 5.6% from Befasy, 3.3% from Ampanihy and 2.5% from Andranopasy and Belo-sur-Mer. Analaiva and Bemanonga have the lowest estimated baobab den-

Table 2. Baobab fibers in the markets. Quantities of straps and ropes recorded during the monitoring between March 2013 and January 2014 and the mean ( $\pm$  SE) per product at each market.

Market	N observation days	N straps	Price strap (MGA/unit)	Total length of ropes (m)	Price rope (MGA/m)
Analaiva	71	760	$287.5 \pm 54.9$	640	$203.3 \pm 15.0$
Bemanonga	103	21,594	$190.2 \pm 3.3$	34,517	$336.5 \pm 5.3$
Mahabo	70	632	$241.7 \pm 22.9$	1.45	$534.6 \pm 11.0$
Morondava	52	1,315	$500.0 \pm 21.8$	-	-

Table 1. Estimated densities of *Adansonia grandidieri* at the five communes surveyed in Menabe Region between 2008 and 2010 and patterns of bark harvesting.

Commune	Area (km <sup>2</sup> )	N transects	N trees	Density/km <sup>2</sup>	% trees harvested	Surface harvested ( $\pm$ SE m <sup>2</sup> )	% total bark surface ( $\pm$ SE)
Ampanihy	1,602	34	399	209.4	48.4	$2.5 \pm 0.3$	$2.1 \pm 0.2$
Analaiva	546	12	66	173.4	56.1	$5.7 \pm 1.2$	$4.7 \pm 0.9$
Andranopasy	1,718	20	439	485.5	44.9	$3.9 \pm 0.5$	$4.0 \pm 0.4$
Befasy	640	20	246	429.1	63.4	$4.2 \pm 0.4$	$3.5 \pm 0.3$
Bemanonga	1,113	17	97	107.4	96.9	$3.0 \pm 0.7$	$1.2 \pm 0.3$

sity (Table 1) but have the highest bark harvesting rate (2.7 and 5.1% of the populations, respectively).

## DISCUSSION

This study showed that more than half of the Grandidier's baobab trees in the wild have been subject to bark extraction. Since only part of the bark has been removed, the trees are still standing many years after the extraction. However, we started to observe intensive harvesting which consists in cutting down the trees to remove all the bark. If this practise continues, it will cause the decline of the species in the short term.

Ropes made with baobab barks are used as harnesses for the cattle and for attaching canoes (Wickens and Lowe 2008, Marie et al. 2009). They are preferred to the nylon ropes because of their low cost but also, they last longer and do not harm the cattle. In villages where the palm *Bismarckia nobilis* is growing, it is also used in place of the baobabs for making ropes (Mamilaza 2009). However, people would still prefer using baobab ropes and straps if those were available. Selling 10m of ropes per day would be necessary for a person living only on baobab rope trade to reach the poverty line of \$US2 per day (World Bank 2014). Although baobab bark harvesting and making ropes does not represent a major activity in the Menabe, it can be an important source of income for some. This aspect should be considered when developing rules related to bark harvesting. Planting the palm *Bismarckia nobilis* is an alternative measure to be promoted as it is a fire-resistant fast-growing species with similar use by local populations as the baobabs.

This study could not solve the 'dispute' between local communities and scientists regarding the impact of bark harvesting on the baobab trees. On one hand, community members argue that bark removal do not harm the baobab trees while they agree that bark does not regenerate. However, in the wild, the baobabs are still standing. On the other hand, scientists advocate that bark harvesting might represent a threat to the trees as they are more exposed to ecological and climatic threats (Wickens and Lowe 2008). In the Allée des Baobabs, lower barks have been removed on almost all the trees but they are still standing (Wickens and Lowe 2008). In order to determine if the Grandidier's baobab barks can be sustainably managed and how, in-depth studies on the impact of bark harvesting is required (Ticktin 2004). In fact, trees may recover from bark harvesting depending on the species, the technique used and the environmental conditions (Delvaux et al. 2009). Bark harvesting also has different impacts on tree growth or fruit production and hence on population sizes (Gaoue and Ticktin 2008, Schumann et al. 2010, Schmidt et al. 2011).

The most recent population estimation of the Grandidier's baobab is at one million trees (Vieilledent et al. 2013). During a period of 10 months, we recorded 34 517m of baobab ropes at the four markets monitored. Assuming that these ropes came exclu-

sively from the partially debarked baobabs, they would come from 5230–5991 trees. By extrapolation, there should be enough baobab bark stock for 1912 months (159 years) of baobab barks in the wild. However, we also found that 54% of the baobabs we found during the field surveys have already been debarked. As a result, if the demand remains constant, there is stock only for about 73 years (159 years \* 46%).

Other studies in Africa reported that bark harvesting affects negatively the survival of baobab trees (e.g., Hall and Bawa 1993, Peters 1994, Cunningham 2001). Survival is threatened because the extraction of barks could make the individual more susceptible to pathogen attacks or could expose stem cortex tissue, impairing the flow of water and nutrients, hence reducing survival rates (Cunningham 2001). Botha et al. (2004) also found that on other tree species, bark removal affected fruit production. In the wild, we have seen that some Grandidier's baobab had fruits while others did not. Bark harvesting might be a factor contributing to this variation.

Effective management of the protected areas will play a central role to ensure conservation of the Grandidier's baobab. The Menabe region, where the Grandidier's baobab is most abundant, has four protected areas: Kirindy-Mitea National Park (72 200 ha), Andranomena (6420 ha) and Ambohijanahary Special Reserves (27 650 ha) and the Menabe-Antimena Reserve (125 000 ha) (Gardner 2011, Waeber et al. 2019). These protected areas represent 36% of the Menabe terrestrial ecosystems. If these protected areas also had 36% of the baobab population—bark harvesting is prohibited in protected areas—people will have access to only 640 000 baobab trees, providing barks for some 40–47 years using the traditional method (i.e., removing the bark without sophisticated, modern tools at heights not exceeding that of the exploiter). After this period, risks of felling trees to meet the demands of the market will increase in accessible areas (Marie et al. 2009). We thus recommend the establishment of local management structures that can monitor and regulate exploitation of baobab barks outside of protected areas by following the rights transfer system by which communities can regulate access to natural resources in their territory, including the baobabs (Antona et al. 2004). In this case, it is necessary that the government who gives the rights builds the capacity of the communities to do so and support them until they can independently manage the resources and get benefits.

## ACKNOWLEDGEMENTS

We are grateful to the Ministère de l'Environnement, de l'Écologie et des Forêts for granting us the permit to conduct this research. We thank all who participated and assisted in the project: our local guides, the Direction Régionale de l'Environnement et des Forêts Menabe, and the Madagascar National Parks team in Morondava. We received support from the Département des Eaux et

Table 3. Origin of the baobab bark products available at the markets monitored. (Numbers indicate the percentage of products in the market coming from the Commune)

Market	Ampanihy	Analaiva	Andranopasy	Befasy	Belo-sur-Mer	Bemanonga
<b>Straps</b>						
Analaiva	-	36.8	-	-	-	63.2
Bemanonga	-	0.6	-	9.1	2.9	87.4
Mahabo	100	-	-	-	-	-
Morondava	-	-	45.6	5.7	-	48.7
<b>Ropes</b>						
Analaiva	-	100	-	-	-	-
Bemanonga	-	43.3	-	3.9	0.9	52.0
Mahabo	94.5	5.5	-	-	-	-

Forêts at the École Supérieure des Sciences Agronomiques (University of Antananarivo). We acknowledge Eunicia Mamilaza and Noromampandra Razafindrakoto, José Ravelomanantsoa and Robert Rajaonarison who assisted with data collection during the baobab surveys. We thank Fauna & Flora International and the Global Trees Campaign for funding this project.

## REFERENCES

- Antona, M., Biénabe, E. M., Salles, J.-M., Péchard, G., Aubert, S. and Ratsimbarison, R. 2004. Rights transfers in Madagascar biodiversity policies: achievements and significance. *Environment and Development Economics* 9, 6: 825–847. <<https://doi.org/10.1017/S1355770X04001640>>
- Baum, D. A. 1996. The ecology and conservation of the baobabs of Madagascar. *Primate Report* 46: 311–327.
- Bond, J. 2002. Baobabs. In: *Guide to Madagascar*, 7th edn. Bradt H. (ed.), pp 40–46. Bradt Publications, Chalfont St. Peter.
- Botha, J., Witkowski, E. T. F. and Shackleton, C. M. 2004. The impact of commercial harvesting on *Warburgia salutaris* (pepper-bark tree) in Mpumalanga, South Africa. *Biodiversity & Conservation* 13, 9: 1675–1698. <<https://doi.org/10.1023/B:BIOC.0000029333.72945.b0>>
- Brooks, T. M., Mittermeier, R. A., Mittermeier, C. G., da Fonseca, G. A. B., Rylands, A. B. et al. 2002. Habitat loss and extinction in the hotspots of biodiversity. *Conservation Biology* 16, 4: 909–923. <<https://doi.org/10.1046/j.1523-1739.2002.00530.x>>
- Callmänder, M. W., Phillipson, P. B., Schatz, G. E., Andriambololona, S., Rabarimanarivo, M. et al. 2011. The endemic and non-endemic vascular flora of Madagascar updated. *Plant Ecology and Evolution* 144, 2: 121–125. <<https://doi.org/10.5091/plecevo.2011.513>>
- Cron, G. V., Karimi, N., Glennon, K. L., Udeh, C., Witkowski, E. T. F., et al. 2016. One African baobab species or two? A re-evaluation of *Adansonia kilima*. *South African Journal of Botany* 103: 312. <<https://doi.org/10.1016/j.sajb.2016.02.036>>
- Cuni Sanchez, A., Osborne, P. E. and Haq, N. 2010. Identifying the global potential for baobab tree cultivation using ecological niche modelling. *Agroforestry Systems* 80, 2: 191–201. <<https://doi.org/10.1007/s10457-010-9282-2>>
- Cunningham, A. 2001. *Applied ethnobotany: people, wild plant uses and conservation*. Earthscan Publications Ltd., London, UK.
- Delvaux, C., Sinsin, B., Darchambeau, F. and Van Damme, P. 2009. Recovery from bark harvesting of 12 medicinal tree species in Benin, West Africa. *Journal of Applied Ecology* 46, 3: 703–712. <<https://doi.org/10.1111/j.1365-2664.2009.01639.x>>
- Ehrensperger, T., Urech, Z. L., Rehnus, M. and Sorg, J. P. 2013. Fire impact on the woody plant components of dry deciduous forest in Central Menabe, Madagascar. *Applied Vegetation Science* 16, 4: 619–628. <<https://doi.org/10.1111/avsc.12034>>
- Gaoue, O. G. and Tickin, T. 2008. Impacts of bark and foliage harvest on *Khaya senegalensis* (Meliaceae) reproductive performance in Benin. *Journal of Applied Ecology* 45, 1: 34–40. <<https://doi.org/10.1111/j.1365-2664.2007.01381.x>>
- García, G. and Goodman, S. M. 2003. Hunting of protected animals in the Parc National d'Ankarafantsika, north-western Madagascar. *Oryx* 37, 1: 115–118. <<https://doi.org/10.1017/S0030605303000206>>
- Gardner, C. J. 2011. IUCN management categories fail to represent new, multiple-use protected areas in Madagascar. *Oryx* 45, 3: 336–346. <<https://doi.org/10.1017/S0030605310001808>>
- Graf, E., Andriambelo, L. H. and Sorg, J.-P. 2009. Ecological and social issues, availability and uses of four timber tree species in Menabe, Madagascar. *Bois et Forêts des Tropiques* 302, 4: 33–41.
- Greenwood, J. J. D. and Robinson, R. A. 2006. General census methods. In: *Ecological Census Techniques*. Sutherland, W. J. (ed.), pp 87–183. Cambridge University Press, Cambridge.
- Grinand, C., Rakotomalala, F., Gond, V., Vaudry, R., Bernoux, M. and Vieilledent, G. 2013. Estimating deforestation in tropical humid and dry forests in Madagascar from 2000 to 2010 using multi-date Landsat satellite images and the random forests classifier. *Remote Sensing of Environment* 139: 68–80. <<https://doi.org/10.1016/j.rse.2013.07.008>>
- Hall, P. and Bawa, K., 1993. Methods to assess the impact of the extraction of non-timber tropical forest products on plant populations. *Economic Botany* 47, 3: 234–247. <<https://doi.org/10.1007/BF02862289>>
- IUCN 2016. The IUCN Red List of Threatened Species 2016. Version 3.1. Available online <[www.iucnredlist.org](http://www.iucnredlist.org)>
- Karimi, N., Grover, C. E., Gallagher, J. P., Wendel, J. F., Ané, C. and Baum, D. A. 2019. Reticulate evolution helps explain apparent homoplasy in floral biology and pollination in baobabs (Adansonia; Bombacoideae; Malvaceae). *Systematic Biology*. <<https://doi.org/10.1093/sysbio/syz073/5613901>>
- Krebs, C. J. (ed.) 1999. *Ecological Methodology*. Benjamin Cummings, Menlo Park, California.
- Kremen, C., Cameron, A., Moilanen, A., Phillips, S. J., Thomas, C. D. et al. 2008. Aligning conservation priorities across taxa in Madagascar with high-resolution planning tools. *Science* 320, 5873: 222–226. <<https://doi.org/10.1126/science.1155193>>
- Mamilaza, L. E. 2009. Diagnostic de la filière baobab : quelles limites et perspectives ? Cas de *Adansonia grandidieri* dans la commune de Bemanonga, région du Menabe. Mémoire d'études pour l'obtention du Diplôme d'Etudes Supérieures Spécialisées. Option Développement Local et Gestion de Projet. 63 pp. Faculté de Droit, Economie et de la Sociologie. Département Economie. Université d'Antananarivo.
- Marie, C. N., Sibelet, N., Dulcire, M., Rafalimaro, M., Danthu, P. and Carrière, S. M. 2009. Taking into account local practices and indigenous knowledge in an emergency conservation context in Madagascar. *Biodiversity and Conservation* 18, 10: 2759–2777. <<https://doi.org/10.1007/s10531-009-9672-9>>
- Miles, L., Newton, A. C., DeFries, R. S., Ravilious, C., May, I., et al. 2006. A global overview of the conservation status of tropical dry forests. *Journal of Biogeography* 33, 3: 491–505. <<https://doi.org/10.1111/j.1365-2699.2005.01424.x>>
- Mukamuri, B. B. and Kozanayi, W. 1999. Institutions surrounding the use of marketed bark products. The case of *Berchemia discolor*, *Adansonia digitata*, and *Warburgia salutaris*. IES Working Paper Number 17. Available at <<https://opendocs.ids.ac.uk/opendocs/>>
- Mutke, J., Sommer, J. H., Kreft, H., Kier, G. and Barthlott, W. 2011. Vascular plant diversity in a changing world: global centres and biome-specific patterns. In: *Biodiversity Hotspots—Evolution and Conservation*. J. C. Habel and F. Zachos (eds.), pp 83–96. Springer, Berlin, Heidelberg, Germany.
- Myers, N., Mittermeier, R. A., Mittermeier, C. G., da Fonseca, G. A. B. and Kent, J. 2000. Biodiversity hotspots for conservation priorities. *Nature* 403: 853–858.
- Neudert, R., Ganzhorn, J. U. and Waetzold, F. 2017. Global benefits and local costs—the dilemma of tropical forest conservation: A review of the situation in Madagascar. *Environmental Conservation* 44, 1: 82–96. <<https://doi.org/10.1017/S0376892916000552>>
- Norscia, I. and Borgognini-Tarli, S. M. 2006. Ethnobotanical reputation of plant species from two forests of Madagascar: A preliminary investigation. *South African Journal of Botany* 72, 4: 656–660. <<https://doi.org/10.1016/j.sajb.2006.04.004>>
- Perrier de la Bâthie, H. 1924. Sur quelques plantes non cultivées de Madagascar à fruits comestibles ou utiles et sur la possibilité de leur culture. *Journal d'Agriculture Traditionnelle et de Botanique Appliquée* 38: 652–662. <<https://doi.org/10.3406/jatba.1924.4224>>
- Peters, C. M. 1994. Sustainable harvest of non-timber plant resources in tropical moist forest: an ecological primer. WWF, Washington.
- Ramohavelo, D. and Sorg, J.-P. 2008. Using NTFPs to drive rural development without threatening biodiversity? A concrete example concerning four NTFPs in Central Menabe, Madagascar. *Tropentag 2008 University of Hohenheim, October 7–9, 2008 Conference on International Research on Food Security, Natural Resource Management and Rural Development*.
- Randrianandrianina, F. H., Racey, P. A. and Jenkins, R. K. B. 2010. Hunting and consumption of mammals and birds by people in urban areas of western Madagascar. *Oryx* 44, 3: 411–415. <<https://doi.org/10.1017/S003060531000044X>>

- Scales, I. R. 2012. Lost in translation: conflicting views of deforestation, land use and identity in western Madagascar. *The Geographical Journal* 178, 1: 67–79. <<https://doi.org/10.1111/j.1475-4959.2011.00432.x>>
- Scales, I. R. 2014. Tourism, conservation and development in Madagascar: moving beyond panaceas? In: *Rainforest Tourism, Conservation and Management: Challenges for Sustainable Development*. B. Prideaux (ed.), pp 255–256. Earthscan, London.
- Schmidt, I. B., Mandle, L., Ticktin, T. and Gaoue, O. G. 2011. What do matrix population models reveal about the sustainability of non-timber forest product harvest? *Journal of Applied Ecology* 48, 4: 815–826. <<https://doi.org/10.1111/j.1365-2664.2011.01999.x>>
- Schumann, K., Wittig, R., Thiombiano, A., Becker, U. and Hahn, K. 2010. Impact of land-use type and bark and leaf-harvesting on population structure and fruit production of the baobab tree (*Adansonia digitata* L.) in a semi-arid savanna, West Africa. *Forest Ecology and Management* 260, 11: 2035–2044. <<https://doi.org/10.1016/j.foreco.2010.09.009>>
- Ticktin, T. 2004. The ecological implications of harvesting non-timber forest products. *Journal of Applied Ecology* 41, 1: 11–21. <<https://doi.org/10.1111/j.1365-2664.2004.00859.x>>
- Veilledent, G., Cornu, C., Cuni Sanchez, A., Leong Pock-Tsy, J.-M. and Danthu, P. 2013. Vulnerability of baobab species to climate change and effectiveness of the protected area network in Madagascar: Towards new conservation priorities. *Biological Conservation* 166: 11–22. <<https://doi.org/10.1016/j.biocon.2013.06.007>>
- Waeber, P. O., Rafanoharana, S., Rasamuel, H. A. and Wilmé, L. 2019. Parks and reserves in Madagascar: managing biodiversity for a sustainable future. [Online First], *IntechOpen*. <<https://doi.org/10.5772/intechopen.85348>>
- West, P. W. 2009. *Tree and Forest Measurement*. Springer-Verlag Berlin Heidelberg.
- Wickens, G. E. and Lowe, P. 2008. *The Baobabs: Pachycauls of Africa, Madagascar and Australia*. Springer, The Netherlands.
- Wilmé, L., Ravokatra, M., Dolch, R., Schuurman, D., Mathieu, E., et al. 2012. Toponyms for centers of endemism in Madagascar. *Madagascar Conservation & Development* 7: 30–40. <<https://doi.org/10.4314/mcd.v7i1.6>>
- World Bank. 2014. *Poverty Overview*. Available at <<http://tiny.cc/4wbghz>>
- Zinner, D., Wygoda, C., Razafimanantsoa, L., Rasoloarison, R., Andrianandrasana, H. T., et al. 2013. Analysis of deforestation patterns in the central Menabe, Madagascar, between 1973 and 2010. *Regional Environmental Change* 14, 1: 157–166. <<https://doi.org/10.1007/s10113-013-0475-x>>

## SUPPLEMENTARY MATERIAL

Table S1. Starting points of transects in the Menabe Region.

Table S1. Starting points of transects in the Menabe Region. (In total 103 points: 15 at Ampataka 1; 15 at Ampataka 2; 13 at Bekonazy, 15 at Bepeha-Andoviana; 15 at Benato-Antanambao-Sara, 15 at Ankoba 1 and 15 at Ankoba 2).

District	Commune	Site	Transect number	Longitude	Latitude	Altitude (m)
Morondava	Bemanonga	Ampataka 1	1	44.27830	-20.294910	16
Morondava	Bemanonga	Ampataka 1	2	44.62080	-20.122520	44
Morondava	Bemanonga	Ampataka 1	3	44.62255	-20.159750	40
Morondava	Bemanonga	Ampataka 1	4	44.62122	-20.151660	39
Morondava	Bemanonga	Ampataka 1	5	44.62166	-20.143830	40
Morondava	Bemanonga	Ampataka 1	6	44.61736	-20.135830	42
Morondava	Bemanonga	Ampataka 1	7	44.61952	-20.125970	49
Morondava	Bemanonga	Ampataka 1	8	44.62611	-20.119080	47
Morondava	Bemanonga	Ampataka 1	9	44.62730	-20.116720	54
Morondava	Bemanonga	Ampataka 1	10	44.65908	-20.116940	85
Morondava	Bemanonga	Ampataka 1	11	44.65933	-20.115880	74
Morondava	Bemanonga	Ampataka 1	12	44.62488	-20.123500	40
Morondava	Bemanonga	Ampataka 1	13	44.62041	-20.122380	39
Morondava	Bemanonga	Ampataka 1	14	44.62322	-20.129720	45
Morondava	Bemanonga	Ampataka 1	15	44.62072	-20.134080	41
Morondava	Bemanonga	Ampataka 2	1	44.62136	-20.126410	50
Morondava	Bemanonga	Ampataka 2	2	44.62055	-20.127130	47
Morondava	Bemanonga	Ampataka 2	3	44.63777	-20.159550	55
Morondava	Bemanonga	Ampataka 2	4	44.63755	-20.158520	46
Morondava	Bemanonga	Ampataka 2	5	44.41052	-20.180520	16
Morondava	Bemanonga	Ampataka 2	6	44.40830	-20.178860	15
Morondava	Bemanonga	Ampataka 2	7	44.40319	-20.176830	16
Morondava	Bemanonga	Ampataka 2	8	44.42358	-20.176880	21
Morondava	Bemanonga	Ampataka 2	9	44.43394	-20.181800	24
Morondava	Bemanonga	Ampataka 2	10	44.43477	-20.182550	23
Morondava	Bemanonga	Ampataka 2	11	44.43005	-20.179910	21
Morondava	Bemanonga	Ampataka 2	12	44.39186	-20.261190	18
Morondava	Bemanonga	Ampataka 2	13	44.42747	-20.163690	10
Morondava	Bemanonga	Ampataka 2	14	44.42866	-20.172080	15
Morondava	Bemanonga	Ampataka 2	15	44.40747	-20.250050	21
Morondava	Bemanonga	Bekonazy	1	44.40541	-20.258500	24
Morondava	Bemanonga	Bekonazy	2	44.39941	-20.261080	21
Morondava	Bemanonga	Bekonazy	3	44.43872	-20.254080	22
Morondava	Bemanonga	Bekonazy	4	44.43800	-20.252500	22
Morondava	Bemanonga	Bekonazy	5	44.42158	-20.238360	23
Morondava	Bemanonga	Bekonazy	6	44.50838	-20.096630	28



Andriafidison, A., Raveloson, C. O., Mananjara, W. S., Razafimanahaka, J. H. 2019. Bark harvesting: a potential threat for the Granddier's baobab *Adansonia grandidieri* in western Madagascar. *Madagascar Conservation & Development* 14, 1: 6–11. <http://dx.doi.org/10.4314/mcd.v14i1.3>  
Supplementary material

District	Commune	Site	Transect number	Longitude	Latitude	Altitude (m)
Morondava	Bemanonga	Bekonazy	7	44.50858	-20.096610	20
Morondava	Bemanonga	Bekonazy	8	44.50263	-20.070000	20
Morondava	Bemanonga	Bekonazy	9	44.50658	-20.070050	19
Morondava	Bemanonga	Bekonazy	10	44.49216	-20.061630	17
Morondava	Bemanonga	Bekonazy	11	44.49025	-20.064000	17
Morondava	Bemanonga	Bekonazy	12	44.47388	-20.08022	7
Morondava	Bemanonga	Bekonazy	13	44.48455	-20.06677	14
Mahabo	Ampanihy	Bepeha-Andoviana	1	44.67719	-20.469610	75
Mahabo	Ampanihy	Bepeha-Andoviana	2	44.65849	-20.497760	90
Mahabo	Ampanihy	Bepeha-Andoviana	3	44.65951	-20.487090	89
Mahabo	Ampanihy	Bepeha-Andoviana	4	44.66063	-20.456640	80
Mahabo	Ampanihy	Bepeha-Andoviana	5	44.67904	-20.469910	82
Mahabo	Ampanihy	Bepeha-Andoviana	6	44.61646	-20.509720	93
Mahabo	Ampanihy	Bepeha-Andoviana	7	44.62056	-20.532390	100
Mahabo	Ampanihy	Bepeha-Andoviana	8	44.62123	-20.529230	104
Mahabo	Ampanihy	Bepeha-Andoviana	9	44.62059	-20.528420	96
Mahabo	Ampanihy	Bepeha-Andoviana	10	44.67713	-20.468720	83
Mahabo	Ampanihy	Bepeha-Andoviana	11	44.63363	-20.490300	85
Mahabo	Ampanihy	Bepeha-Andoviana	12	44.60966	-20.464560	79
Mahabo	Ampanihy	Bepeha-Andoviana	13	44.60857	-20.463240	81
Mahabo	Ampanihy	Bepeha-Andoviana	14	44.61038	-20.461030	78
Mahabo	Ampanihy	Bepeha-Andoviana	15	44.60884	-20.459620	73
Mahabo	Ampanihy	Benato-Antanambao-Sara	1	44.60848	-20.455640	71
Mahabo	Ampanihy	Benato-Antanambao-Sara	2	44.61065	-20.404090	66
Mahabo	Ampanihy	Benato-Antanambao-Sara	3	44.61038	-20.403610	63
Mahabo	Ampanihy	Benato-Antanambao-Sara	4	44.61078	-20.405770	65
Mahabo	Ampanihy	Benato-Antanambao-Sara	5	44.60905	-20.408970	56
Mahabo	Ampanihy	Benato-Antanambao-Sara	6	44.61895	-20.416040	67
Mahabo	Ampanihy	Benato-Antanambao-Sara	7	44.61577	-20.420110	68
Mahabo	Ampanihy	Benato-Antanambao-Sara	8	44.61504	-20.423790	81
Mahabo	Ampanihy	Benato-Antanambao-Sara	9	44.61516	-20.425050	67
Mahabo	Ampanihy	Benato-Antanambao-Sara	10	44.61598	-20.426670	61
Mahabo	Ampanihy	Benato-Antanambao-Sara	11	44.61860	-20.429190	59
Mahabo	Ampanihy	Benato-Antanambao-Sara	12	44.62023	-20.433350	63
Mahabo	Ampanihy	Benato-Antanambao-Sara	13	44.66119	-20.503390	96
Mahabo	Ampanihy	Benato-Antanambao-Sara	14	44.67646	-20.467870	76
Mahabo	Ampanihy	Benato-Antanambao-Sara	15	44.65951	-20.490260	78
Manja	Andranopasy	Ankoba 1	1	43.88064	-21.297020	58
Manja	Andranopasy	Ankoba 1	2	43.87883	-21.299260	58

Andriafidison, A., Raveloson, C. O., Mananjara, W. S., Razafimanahaka, J. H. 2019. Bark harvesting: a potential threat for the Granddier's baobab *Adansonia grandidieri* in western Madagascar. *Madagascar Conservation & Development* 14, 1: 6–11. <http://dx.doi.org/10.4314/mcd.v14i1.3>  
 Supplementary material

District	Commune	Site	Transect number	Longitude	Latitude	Altitude (m)
Manja	Andranopasy	Ankoba 1	3	43.87789	-21.300580	47
Manja	Andranopasy	Ankoba 1	4	43.87702	-21.303370	51
Manja	Andranopasy	Ankoba 1	5	43.87603	-21.304910	49
Manja	Andranopasy	Ankoba 1	6	43.88206	-21.300970	53
Manja	Andranopasy	Ankoba 1	7	43.88248	-21.301990	58
Manja	Andranopasy	Ankoba 1	8	43.88294	-21.305410	54
Manja	Andranopasy	Ankoba 1	9	43.88294	-21.308100	57
Manja	Andranopasy	Ankoba 1	10	43.88258	-21.309130	64
Manja	Andranopasy	Ankoba 1	11	43.87886	-21.312870	60
Manja	Andranopasy	Ankoba 1	12	43.88214	-21.293820	51
Manja	Andranopasy	Ankoba 1	13	43.88808	-21.294630	54
Manja	Andranopasy	Ankoba 1	14	43.89261	-21.294410	55
Manja	Andranopasy	Ankoba 1	15	43.89542	-21.293770	55
Manja	Andranopasy	Ankoba 2	1	43.872700	-21.122820	22
Manja	Andranopasy	Ankoba 2	2	43.874070	-21.125800	7
Manja	Andranopasy	Ankoba 2	3	43.875300	-21.124750	14
Manja	Andranopasy	Ankoba 2	4	43.878140	-21.125220	18
Manja	Andranopasy	Ankoba 2	5	43.881010	-21.124450	27
Manja	Andranopasy	Ankoba 2	6	43.898290	-21.130980	31
Manja	Andranopasy	Ankoba 2	7	43.901170	-21.131520	27
Manja	Andranopasy	Ankoba 2	8	43.903690	-21.132240	29
Manja	Andranopasy	Ankoba 2	9	43.879010	-21.083620	16
Manja	Andranopasy	Ankoba 2	10	43.878030	-21.082810	16
Manja	Andranopasy	Ankoba 2	11	43.875820	-21.084450	19
Manja	Andranopasy	Ankoba 2	12	43.875420	-21.084260	18
Manja	Andranopasy	Ankoba 2	13	43.872890	-21.084920	17
Manja	Andranopasy	Ankoba 2	14	43.871070	-21.123250	17
Manja	Andranopasy	Ankoba 2	15	43.875010	-21.117220	15